

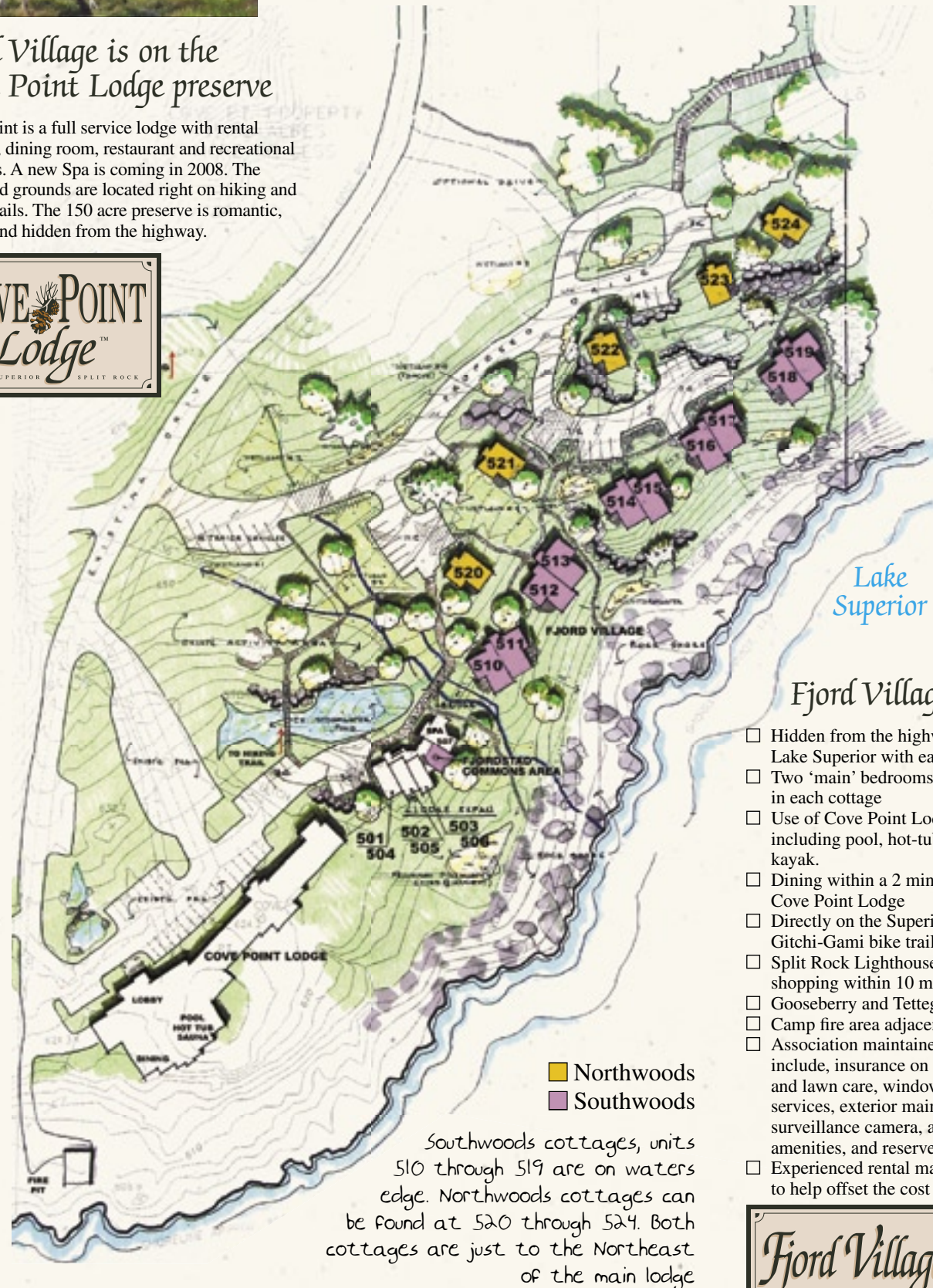


Fjord Village

AT COVE POINT LODGE
BEAVER BAY, MINNESOTA

Fjord Village is on the
Cove Point Lodge preserve

Cove Point is a full service lodge with rental cottages, dining room, restaurant and recreational offerings. A new Spa is coming in 2008. The lodge and grounds are located right on hiking and biking trails. The 150 acre preserve is romantic, private and hidden from the highway.



Lake Superior

Fjord Village Highlights

- Hidden from the highway and on majestic Lake Superior with easy lake access.
- Two 'main' bedrooms facing Lake Superior in each cottage
- Use of Cove Point Lodge amenities including pool, hot-tub, sauna, canoes, kayak.
- Dining within a 2 minute walk at Cove Point Lodge
- Directly on the Superior Hiking Trail and Gitchi-Gami bike trail
- Split Rock Lighthouse, marina, golf, and shopping within 10 minutes
- Gooseberry and Tettegouche State Parks
- Camp fire area adjacent to the lake
- Association maintained property. Dues include, insurance on all buildings, road and lawn care, window washing, landscape services, exterior maintenance, security surveillance camera, availability of amenities, and reserves for future repairs.
- Experienced rental management is available to help offset the cost of ownership.

■ Northwoods
■ Southwoods

Southwoods cottages, units 510 through 519 are on waters edge. Northwoods cottages can be found at 520 through 524. Both cottages are just to the Northeast of the main lodge



by
Fjordstad, LLC
612-816-4564

All plans specifications and pricing are subject to change without notice. Fjord Village is developed by Fjordstad LLC. For more information visit www.covepointlodge.com



Northwoods cottages view Lake Superior.
This is the view from the lake.

Welcome To Fjord Village

AT COVE POINT LODGE

Patterned after the great encampments of Maine and the colorful Norwegian fjord villages, a new charming place is born on the North Shore of Lake Superior.

The moment you arrive you will sense the charm and distinctiveness. Carefully nestled and hidden away in the fragrant pine and rock with spectacular views of Lake Superior. A cozy cottage with a vaulted wood clad ceiling in the living room and expansive lake facing windows.

A place where you can sit at the village campfire ring as the moon rises over the lake or enjoy a cup of coffee in the Fjordstad commons area. Take a short walk to the spa, lodge, pool or dining room where every night is a candle light experience. A place to rest your soul, and create unforgettable memories--come to the village.



Southwoods cottages at Fjord Village view Lake Superior as seen from the lake



by Fjordstad, LLC

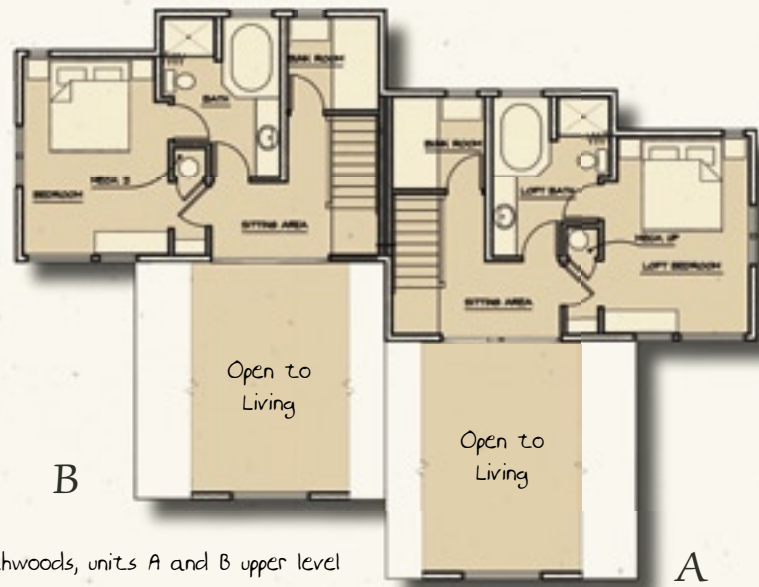


Southwoods Cottages

- 1412 square foot floor plan
- Closest to the waves of Lake Superior
- Unique 'bunk room' space
- Beautiful inside balcony overlooking living room
- Covered deck
- Bright and open design
- Low-E glass windows
- Air conditioning
- Pine trim and tongue and groove living room ceiling
- Ceramic tile entry, hall and kitchen (wood optional)
- Gourmet kitchen with stone countertops
- Refrigerator, range, hood, dishwasher, disposal, microwave
- Washer and dryer (optional)
- Gas fireplace with stone surround and mantel
- Bathrooms with ceramic tile showers and floors
- Whirlpool style tub
- Dramatic walls of glass in expansive vaulted living room
- Landscaped surroundings



Southwoods Cottages



Southwoods, units A and B upper level



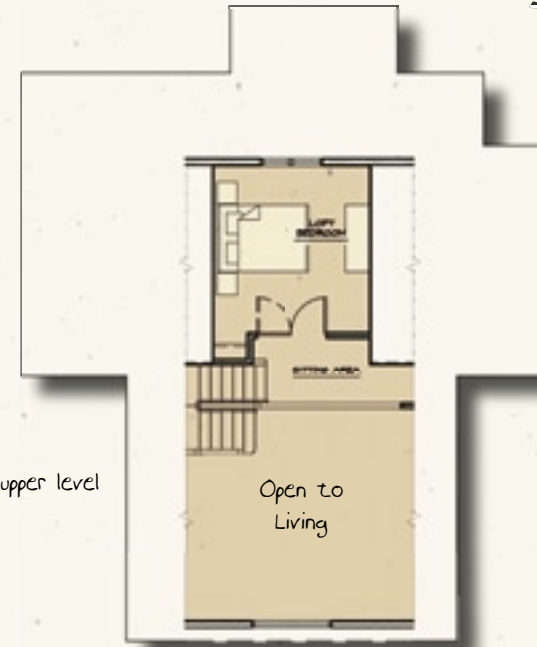
Southwoods, units A and B main level



Southwoods view from lake

Northwoods Cottages

Northwoods upper level



Northwoods main level



Northwoods main level



Northwoods view from lake



Northwoods Cottages

- 1414 square foot floor plan
- Privacy and views of Lake Superior
- Second level with bathroom, bedroom and loft space
- Deck off main level living and dining room area
- Two main bedrooms on the first floor
- Refrigerator, range, hood, dishwasher, disposal, microwave
- Washer/dryer (optional)
- Gas fireplace with stone surround and mantel
- Bathrooms with ceramic tile showers and floors
- Whirlpool style tub
- Dramatic walls of glass in expansive vaulted living room
- Landscaped surroundings
- Bright and open design
- Low-E glass windows
- Air conditioning
- Pine trim and tongue and groove living room ceiling
- Ceramic tile entry, hall and kitchen (wood optional)
- Gourmet kitchen with stone countertops

